

A blue, circuit-board-like profile of a human head facing right, positioned on the left side of the slide.

Non Melanoma Skin Cancer Registry:

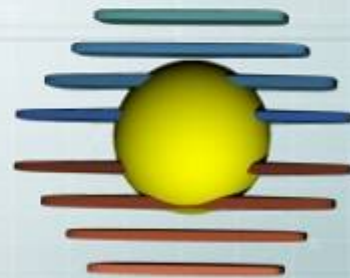
Primary Care Research from a
Geraldton Base from WA Institute of
Skin Cancer Medicine & Rural Health

Dr Stuart Adamson

Dr William Ardrey

Dr Raymond Cockerill

Di Walton Nurse Practitioner



SUNCITY
SKIN
Cancer
CLINIC

Contents

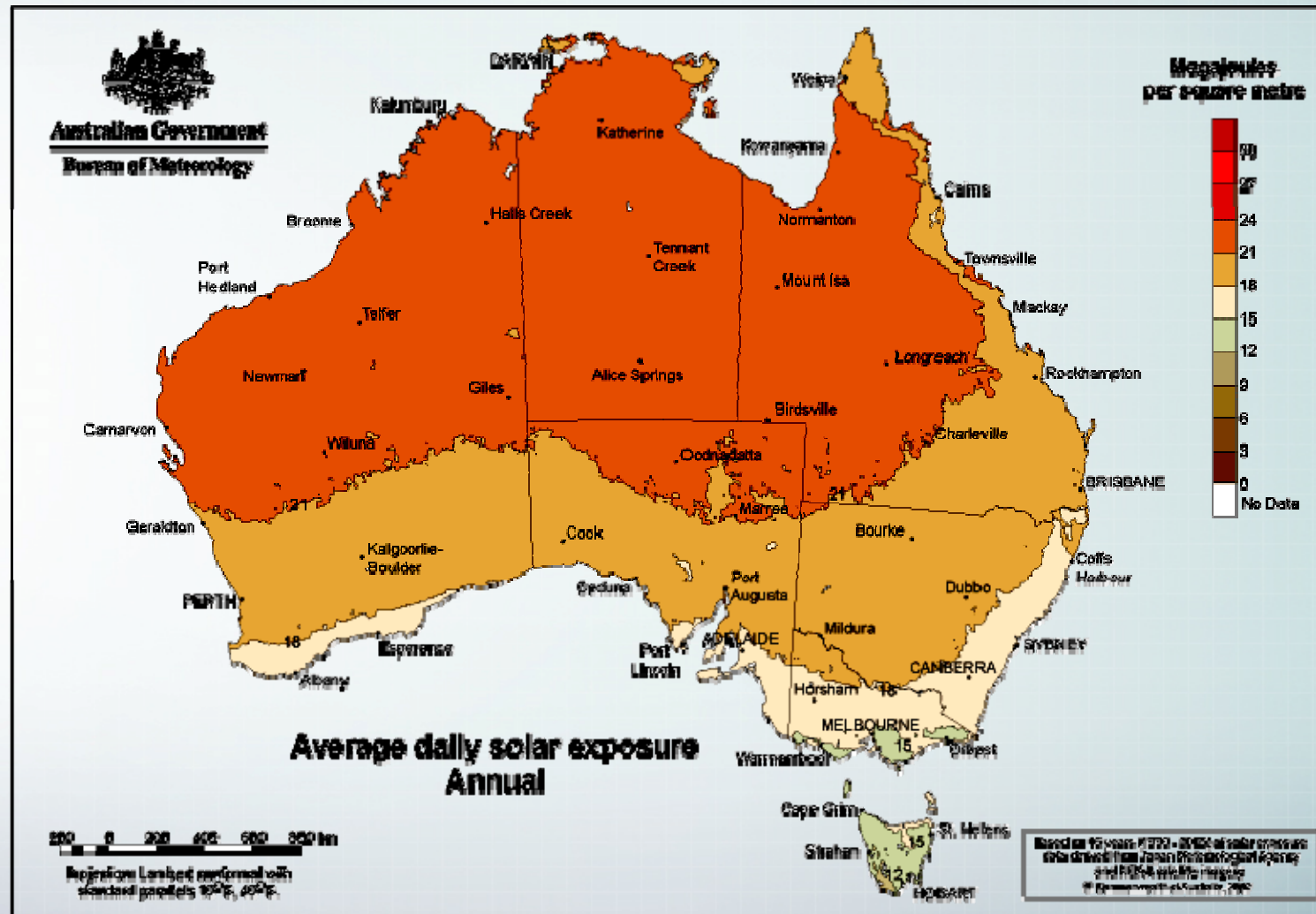
- 1 The skin cancer problem in Geraldton
- 2 Nonmelanoma skin cancer
- 3 Field cancerization & NMSC treatment
- 4 A Registry and Tissue Bank from Geraldton
- 5 Benefits to Midwest and Gascoyne

Skin Cancer in the Midwest

❖ Does Geraldton Have a skin cancer problem???



Solar Exposure:



Non Melanoma Skin Cancer:



Non Melanoma Skin Cancer:



Midwest Solar Dermopathy:



SKIN CANCER DEATHS:

(NMSC & Melanoma) - most common form of cancer in Australia

Cause of over 1600 deaths in 2005.....



SKIN CANCER COSTS:

in 2001 - estimated \$264 million spent on NMSC & \$30million spent on Melanoma .

It is Australia's most expensive cancer!!



SKIN CANCER INCIDENCE:

Aust. and NZ have highest melanoma incidence and mortality rates in the world.....

In 2005 melanoma deaths reached 1,273.....

***a 41.9% increase
over the previous
decade!!!!***

SKIN CANCER INCIDENCE:

Melanoma was 4th most common cancer in Australia in 2004 -
with 9722 new cases reported.

This is a 40.3% increase over the previous decade!!



Registry of Consenting Patients:

Melanoma is MOST COMMON CANCER in 15-24yr old age group.

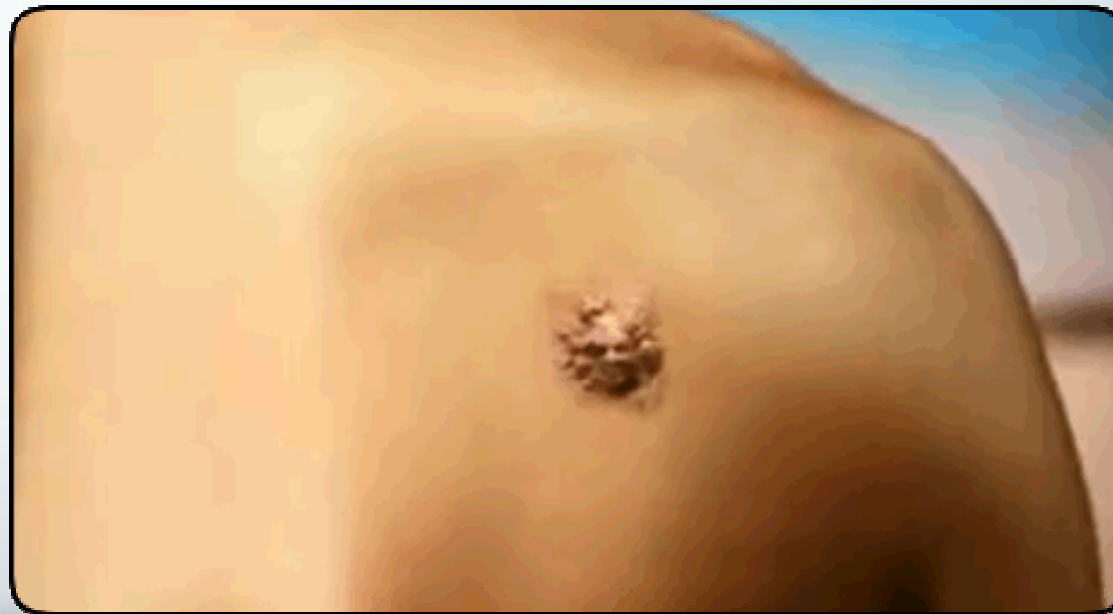
227 young Australians diagnosed in 2004!!!



Registry: Add Tissue Bank

NMSC - most common cancer diagnosed in Australia

Approx 374000 people treated for NMSC in 2002
estimated 433000 people with new diagnoses of NMSC
in 2008



Drug Companies will pay!

NMSC mortality relatively low compared with all other cancers.

**410 deaths in Aust in 2006
(1% of all cancer deaths)**



Tissue Bank, Registry & Science:



Collecting Data/Tissue:



Tissue Bank Data Collection:



Registry: Longitudinal Tracking



Processing from Midwest and Gascoyne: Tissue Bank (Block Mounted into Paraffin)



BLUE

No evidence of residual Basal cell carcinoma.

A1

A2

A3

A4

A5

A6

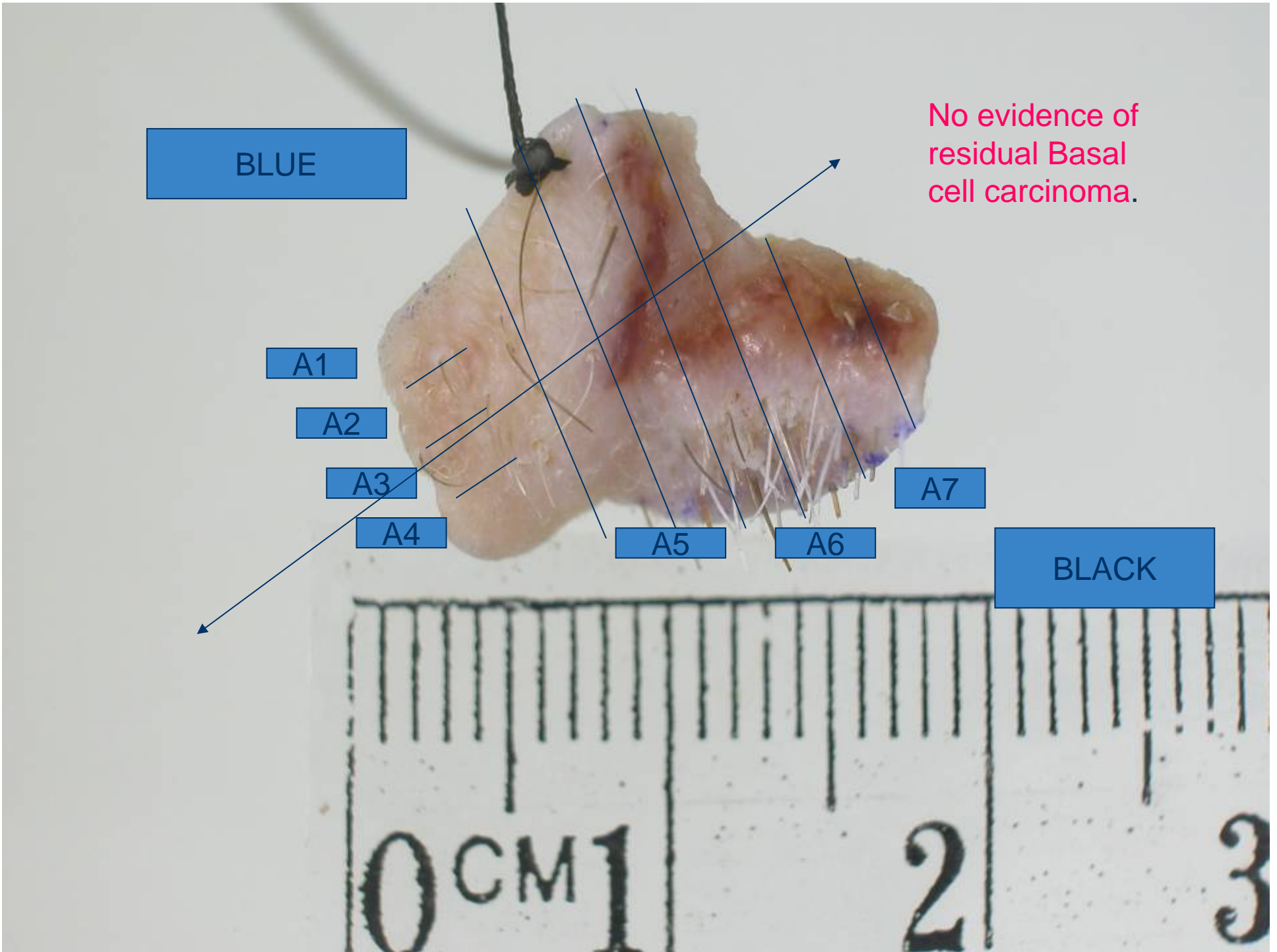
A7

BLACK

0 CM 1

2

3



Current rx options :



CUT



BURN



POISON

Economic Benefit

- ❖ **More Doctors**
- ❖ **More Researchers**
- ❖ **More Research**
- ❖ **More IT**
- ❖ **More technology**
- ❖ **Midwest and Gascoyne "relevant" to research**
- ❖ **More revenue (immunology drug companies)**
- ❖ **More IP and 'value Chain**